

# Nexus

A RYERSON UNIVERSITY NEWSLETTER PRODUCED BY THE LIBRARY

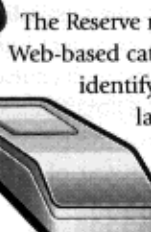
ISSUE NO. 12/MAY 2001

## MINING THE LIBRARY'S DIGITAL RESOURCES

**The Library is exploring the use of technology to begin developing a Reserve collection of digital materials.**

The Ryerson Library invests over half a million dollars annually in acquiring digital resources. Through this investment, the contents of thousands of journals and newspapers are being made available to the Ryerson community through the Library's Web site. The Library is also beginning to acquire reference materials in digital formats. In many instances, the vendors and publishers who distribute these information products now provide the option of creating persistent URLs that can be used to establish links to specific articles. The Library is exploring the use of this technology to begin developing a Reserve collection of digital materials.

### Point and Click

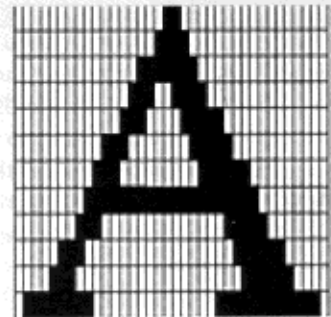


The Reserve module of the Library's Web-based catalogue enables students to identify course-specific readings – largely reprints of articles and copies of selected monographs – that are available in the Library's Reserve collection. A bibliographic record – searchable by course code, course instructor, and item title – is created for each of these readings when they are placed in the Reserve collection.

URLs can now be inserted into these records to create dynamic links to Internet-based materials, including persistent links to the full text of articles available through sources such as Proquest (*ABI/Inform Global*, *Proquest Newsstand*, *PA Research II* and *Applied Science & Technology Plus*) Ebsco (*Academic Search Elite*), *Elsevier*, *Kluwer*, and *CPIQ (Canadian Periodicals Index Quarterly)*. Links can also be established to articles in reference sources such as the *Encyclopaedia of Occupational Health & Safety*, and the *Encyclopedia of Human Nutrition*. Once these links have been established, users can point and click to move directly from the Reserve module of the Library's catalogue to the full text of articles on the Web. Articles can be read online, saved to disk, or printed in hardcopy.

### 7 X 24 Access

Access to the digital reserve collection is available from computers in the Library, in campus labs, and in faculty offices connected to the Ryerson backbone. Off-campus access is available to all Ryerson students, faculty and staff who have configured their home computer systems to connect to the Library's Web site through the Library's proxy server.



Recent growth in digital library content, the demands of our budget, and long-term issues around sustainability of collections call for further data gathering and analysis of our strategies.

As we attempt to balance on-site collections, both print and electronic, and to supplement these with on-demand services such as interlibrary loans, we must re-evaluate our collection policies. Some reappportioning of budgets may be necessary to enable us to serve our users well. Subject librarians will consult accordingly with faculty.

### INSIDE

- Book Bytes: E-books arrive
- We've been busy!
- Supporting faculty and students 2000-2001

RYERSON  
LIBRARY

Continued on page 2

## Digital Resources continued

### Try It Out

Child & Youth Care: Ecological Approaches to CYC Practice (CYC702) is a required course offered by Ryerson's School of Child and Youth Care as part of its degree completion program. Students enrolled in the program reside in communities across Canada. Dr. Carol Stuart who currently teaches CYC702 approached the Library last year with a request to make the Reserve readings associated with the course available to students online.

A quick search of the databases licensed by the Library established that over thirty of the readings were available through sources such as Ebsco's *Academic Search Elite*, Proquest's *PA Research II*, and *Elsevier*. A record for each of the readings was added to the catalogue's Reserve module by Library staff, along with a link to the digital version of the article. The results can be viewed at:  
<http://innopac.lib.ryerson.ca/search/r?cyc702>

Students enrolled in the program reside in communities across Canada

Just click on any of the titles listed and at the next screen click on the link labelled: "Online Version" to connect to the text of the article. Subsequent to this initial effort, links have also been created for courses offered by the School of Occupational and Public Health (OHS323 & OHS516) and the Certificate Program in Interdisciplinary Studies in Nonprofit and Voluntary Sector Management (CINP901).

# Book

# Bytes

## E-books Arrive

As a result of a recent agreement reached by netLibrary and a consortium of Ontario academic libraries, Ryerson Library has purchased a customized collection of electronic books. Approximately 2000 purchased titles, including scholarly works from academic and trade publishers on a wide range of subjects, are now available only to Ryerson faculty, students and staff. Consortium member libraries also have access to thousands of "public" e-books – classic works of literature and history in the public domain.

E-books can be borrowed (checked out), or browsed (previewed for a limited period) using an Internet connection. To "check out" a Ryerson e-book, you will need to "join" netLibrary by creating an account that identifies you as a patron. Using any networked computer on campus, type the URL **www.netlibrary.com** in the browser's address box, connect to netLibrary and set up a free account. E-books are available to be

viewed 24/7 online, or offline through a special netLibrary e-book reader. The reader is available for download at the netLibrary Web site. You will not have to worry about returning the e-books you've borrowed. E-books are automatically returned at the end of the checkout period. You do not need to join netLibrary to browse e-books.

Additional methods for accessing e-books will be available later on as the technical aspects for "joining" and remote access are finalized.

You can find more detailed information on the Library's e-books by connecting to the "What's New" section of our homepage at **www.library.ryerson.ca**. Library staff can also provide assistance in accessing e-books. Just call 416-979-5055 and select the reference option.

E-books will be highlighted during the faculty conference on May 16/17. Watch for announcements in your e-mail and on our homepage.

[www.library.ryerson.ca](http://www.library.ryerson.ca)

### Interested in Linking?

If you would like to explore the possibility of having the Library create persistent links to Reserve readings associated with courses you teach, please contact the librarian responsible for your area. For contact information, consult the directory of Ryerson's subject librarians at:  
<http://www.ryerson.ca/library/info/sublib.html>

Ryerson Polytechnic University Library Catalogue

RETURN TO CATALOGUE

AUTHOR Henry, Carolyn S.  
TITLE Adolescent suicide and families: An ecological approach.

Print/Email/Save Do To Full Text

Title: Adolescent suicide and families: An ecological approach.  
Subject(s): SUICIDE -- Prevention; ADOLESCENT psychology  
Source: Adolescence, Summer 93, Vol. 28, Issue 116, p281-18p  
Author(s): Henry, Carolyn S.; Stephenson, Andy L.  
Abstract: Provides information on adolescent suicide and recommends methods of prevention and intervention at multiple ecosystemic levels. Traditional theories of adolescent suicide; human ecological approach and integrated literature; Prevention and intervention within ecological systems; Potential of human ecological model.  
AN: 9308292049  
ISSN: 0001-8449  
Database: Academic Search Elite  
Print:  Click here to mark for print.

A sample digital reserve record

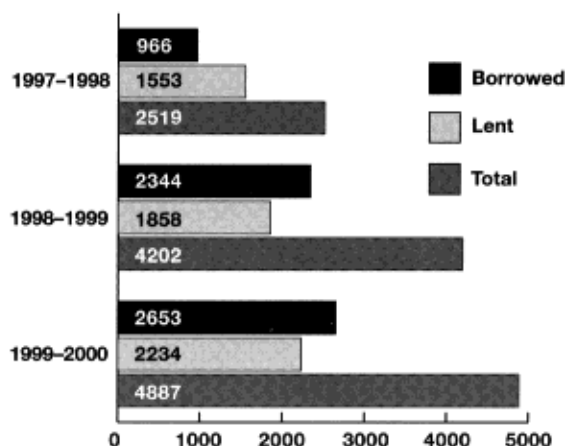
# We've been busy!

## In March 2001

49,770 items re-shelved    109,811 people through doors    60,000 items\* checked out  
 (\* includes charges, renews, self-renews, reserves)

### Interlibrary Loan/Document Delivery

#### The Demand for Interlibrary Loan/Document Delivery Service 1997-2000



*Borrowed: Book loans and article copies requested by Ryerson from other institutions. Lent: Materials lent to other institutions*

*Free interlibrary loan instituted in 1998.*

#### Lending to other institutions

In a 1998 survey of lending and borrowing activities among Ontario university libraries, Ryerson Library had the fastest average turnaround time. Items were mailed out within 1 day of request.

#### Borrowing from other institutions:

Some journal articles requested by our users arrive within 48 hours of request. Books can take anywhere from 10 to 13 days, a factor governed by the lending library.

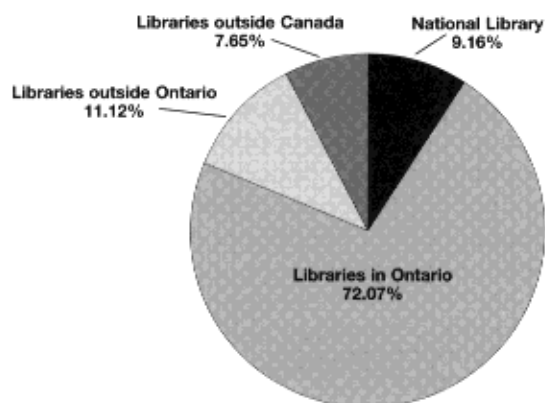
### Database Usage

ABI Inform\* — January to March 2001

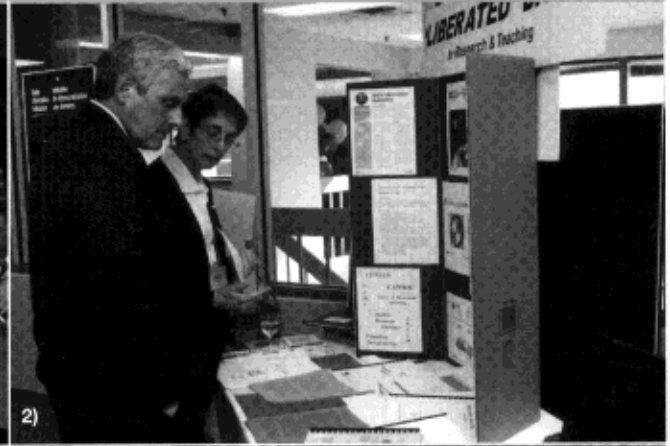
University	Documents Viewed
York University	61354
U. Western Ontario	40194
Ryerson University	37330
McMaster University	33687
Queen's University	25093
University of Ottawa	20093
Wilfrid Laurier University	19522
University of Waterloo	17110
University of Guelph	12861
Laurentian University	12197
Brock University	10717
University of Windsor	7918
Nippising University	1172

*\*A high-use database of business-related periodical articles.*

#### The Suppliers of Our Materials 1999-00

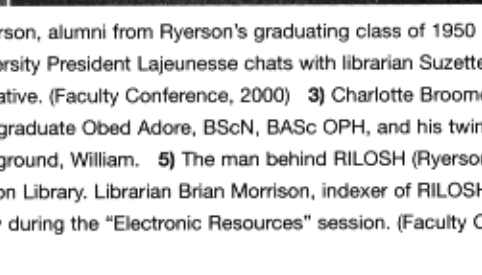
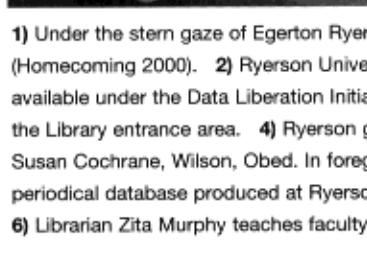
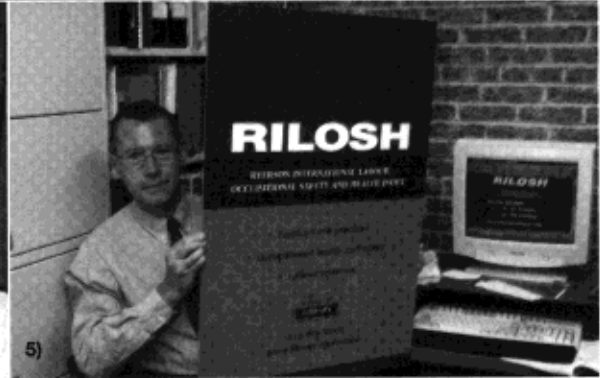
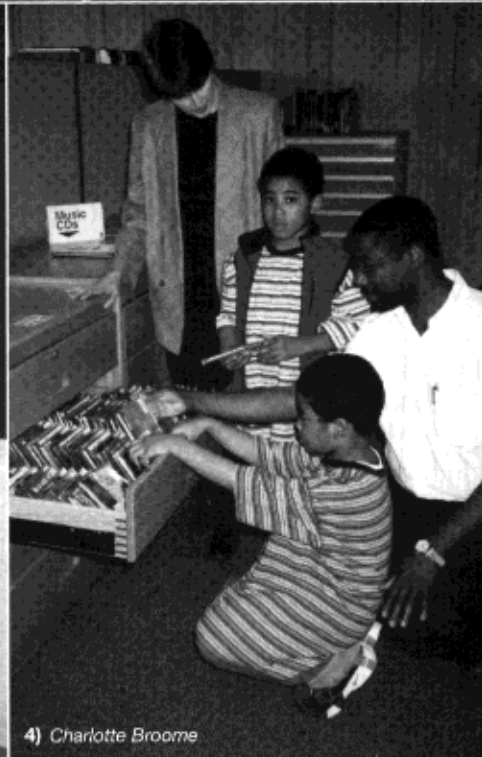


# Supporting Faculty and Students 2000 — 2001



Dave Upham

Dave Upham



Lucina Fraser

Dave Upham

Dave Upham

1) Under the stern gaze of Egerton Ryerson, alumni from Ryerson's graduating class of 1950 listen to Archivist Claude Doucet during their visit to the Archives (Homecoming 2000). 2) Ryerson University President Lajeunesse chats with librarian Suzette Giles at her Statistics Canada display highlighting survey data available under the Data Liberation Initiative. (Faculty Conference, 2000) 3) Charlotte Broome, library technician, next to one of the displays she created for the Library entrance area. 4) Ryerson graduate Obed Adore, BScN, BASc OPH, and his twin sons during a recent trip to the library. *Lf to rt.* Library technician, Susan Cochrane, Wilson, Obed. In foreground, William. 5) The man behind RILOSH (Ryerson International Labour & Occupational Safety and Health Index), a periodical database produced at Ryerson Library. Librarian Brian Morrison, indexer of RILOSH, represented the Library at the SSHRC president's visit last year. 6) Librarian Zita Murphy teaches faculty during the "Electronic Resources" session. (Faculty Conference, 2000)

## Nexus

### CONTRIBUTORS

The following people have been instrumental in the production of this NEXUS issue:  
**Bob Jackson, Cathy Matthews, Lucina Fraser, Zita Murphy, Charlotte Broome**  
**Publications Committee: Elizabeth Bishop, Lucina Fraser, Diane Granfield, Don Kinder**

Please address all comments and correspondence concerning this publication to:  
 Lucina Fraser, Editor, NEXUS, Library, 350 Victoria Street, 2nd Floor  
 Telephone: (416) 979-5000 ext. 6887  
[www.library.ryerson.ca](http://www.library.ryerson.ca)

Published May 2001  
 Ryerson University  
 350 Victoria Street, Toronto, Ontario M5B 2K3  
 Member: Council of Ontario Universities; Association of Universities and Colleges of Canada (AUCC), Association of Commonwealth Universities (ACU)

# RYERSON UNIVERSITY